



**INSTANT TICKET RULES
AND GUIDELINES**

INSTANT TICKET #505

**4 CORNERS HOLIDAY
CROSSWORD**

SECTION 1 - PURPOSE OF GUIDELINES

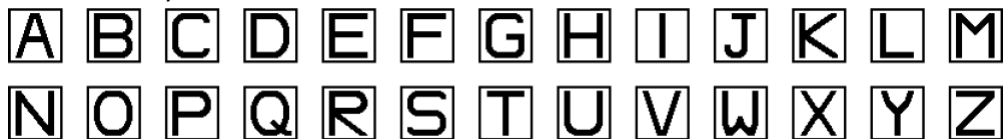
These game specific rules and guidelines are issued pursuant to Iowa Code Section 99G.9(4) (2019) and are intended to supplement the Iowa Lottery's administrative rules published in the Iowa Administrative Code-531. The published administrative rules are also applicable to this game.

SECTION 2 - EFFECTIVE DATE

These rules become effective September 28, 2020 and will remain effective through the announced end of Instant Game #505 unless earlier modified or rescinded by the Lottery Authority CEO.

SECTION 3 - DEFINITIONS

- 3.1 "Ticket" means an Iowa Instant Game #505 Ticket.
- 3.2 "Ticket Validation Codes" for Instant Game #505 is the unique ten (10) character code printed on the front of the ticket, in the YOUR LETTERS play area in a horizontal position underneath the game scratch-off coating and overprint.
- 3.3 "Pack" means a pack of fanfolded Instant Game Tickets which are attached to each other by perforations. These fanfolded Tickets are packed in plastic shrink wrapping. In Instant Game #505, a "Pack" shall consist of 150 Instant Game Tickets fanfolded bearing a common pack number and having a Ticket number starting at 000 and continuing through 149.
- 3.4 "Pack-Ticket Number" is the 12-digit number of the form 505-100001-000 printed on the back of the ticket and above the barcode in black ink. This number shall also appear on the front of the ticket in the abbreviated form 100001-000. A Universal Product Code (UPC) number shall also be printed on the back of the Ticket.
- 3.5 "Play Symbols" for Instant Game #505 are as follows:
Eighteen (18) of these Play Symbols appear under the YOUR LETTERS rub-off area on the front of the ticket in symbol font:



The MAIN CROSSWORD PUZZLE Grid Play Spots, thirteen (13) spaces (high) by thirteen (13) spaces (wide) and the CORNER CROSSWORD PUZZLES Grid Play Spots, four (4) spaces (high) by four (4) spaces (wide) are as follows:



Translucent scratch-off material is laid over the top of the entire MAIN CROSSWORD PUZZLE Grid Play spots and the CORNER CROSSWORD PUZZLES Grid Play spots allowing the imaged symbols to show through.

The following Corner Puzzle Prize symbols will be display printed in black:

\$2.00 \$5.00 \$10.00 \$30.00
TWO FIVE TEN THIRTY

- 3.6 “Legends” The legends YOUR LETTERS and CORNER PUZZLE PRIZE will be imaged in black above the respective play areas. The vertical and horizontal lines on the MAIN CROSSWORD puzzle grid and CORNER PUZZLES grids play area will be imaged in black. Imaged in black around each of the eighteen (18) YOUR LETTERS there will be a four-sided box composed of solid lines. The legend CHECK YOUR TICKET will be imaged in Magenta above the Validation Data Matrix Barcode.
- 3.7 A "Non-Winning Ticket" is defined as an Iowa Instant Game #505 Ticket which is not intended to be a winning Ticket.

SECTION 4 - DETERMINATION OF INSTANT PRIZE WINNERS

- 4.1 “Game Play Area” Scratch all of the 18 YOUR LETTERS; then scratch all of the letters found in the MAIN PUZZLE and the four CORNER PUZZLES that exactly match the letters in YOUR LETTERS.
MAIN PUZZLE: Count the number of completely revealed words in the MAIN PUZZLE that matched the YOUR LETTERS. If you matched 3 or more complete words, win the corresponding prize shown in the MAIN PUZZLE PRIZE LEGEND for that exact word count. A player may win up to 1 prize amount from the MAIN PUZZLE PRIZE LEGEND for that exact count of completely matched words. Words within words are not eligible for prizes.
CORNER PUZZLES: If you match every letter shown in a single CORNER PUZZLE with the YOUR LETTERS, you win the CORNER PUZZLE PRIZE. Each CORNER PUZZLE is played separately and cannot be combined with any other CORNER PUZZLE or the MAIN PUZZLE. Players may win up to one CORNER PUZZLE prize amount per ticket. Words within words are not eligible for prizes.

The Ticket Holder can win up to two (2) times on this ticket. The consolidated prize amounts are as follows:

\$ 2.00	(Two dollars) or
\$ 4.00	(Four dollars) or
\$ 5.00	(Five dollars) or
\$ 10.00	(Ten dollars) or
\$ 15.00	(Fifteen dollars) or
\$ 30.00	(Thirty dollars) or
\$ 60.00	(Sixty dollars) or
\$ 100.00	(One hundred dollars) or
\$ 300.00	(Three hundred dollars) or
\$ 2,000.00	(Two thousand dollars) or
\$ 20,000.00	(Twenty thousand dollars)

- 4.2 No portion of the display printing nor any extraneous matter whatsoever shall be usable or playable as a part of the Instant Game.

- 4.3 In all events, the determination of prize winners shall be subject to the general Ticket validation requirements set forth in Section 6 of these Rules and the requirements set out on the back of each Instant Game Ticket.
- 4.4 The Ticket Validation Number (including any portion thereof) is not a Play Symbol and is not usable as such.

SECTION 5 - NUMBER AND VALUE OF INSTANT PRIZES

There will be approximately 1,636,050 tickets. The expected number and value of prizes in the game are as follows:

Instant Prize	Number of Prizes	Chances of Winning	Method of Payment
\$ 2.00	338,117	1:4.84	Paid by Retailer
\$ 4.00	65,442	1:25.00	Paid by Retailer
\$ 5.00	43,628	1:37.50	Paid by Retailer
\$ 10.00	32,721	1:50.00	Paid by Retailer
\$ 15.00	10,907	1:150.00	Paid by Retailer
\$ 30.00	552	1:2,963.86	Paid by Retailer
\$ 60.00	111	1:14,739.19	Paid by Retailer
\$ 100.00	41	1:39,903.66	Paid by Retailer
\$ 300.00	43	1:38,047.67	Paid by Retailer
\$ 2,000.00	41	1:39,903.66	Paid by Lottery
\$ 20,000.00	14	1:116,860.71	Paid by Lottery

The overall odds are 1:3.33

SECTION 6 - INSTANT TICKET VALIDATION REQUIREMENTS

Besides meeting all of the other requirements in these rules and as printed on the back of each Instant Game Ticket, the following Validation Requirements will apply with regard to the Instant Game Tickets in Iowa Instant Game #505.

- 6.1 To be a valid Instant Game Ticket, all of the following requirements must be met:
- A. The Ticket must be complete, and not miscut, and have exactly one YOUR LETTERS Play Symbol appearing under each of the eighteen (18) rub-off spots on the front of the Ticket in the YOUR LETTERS play area and exactly one (1) Corner Puzzle Prize Play Symbol in the Corner Puzzle Prize spot. Exactly one Play Symbol or one black square must appear in each of the eighty-five (85) MAIN PUZZLE CROSSWORD and the forty (40) CORNER CROSSWORD PUZZLES Grid Play Spots on the front of the Ticket, exactly one legend must appear above the YOUR LETTERS play area and exactly one legend must appear above the CORNER PUZZLE PRIZE play area. Exactly one legend CHECK YOUR TICKET must appear above the Validation Data Matrix Barcode in the SCRATCH 2 CASH area. The ticket must also have exactly one Pack-Ticket Number, exactly one Validation Number, exactly one Inventory Tracking Barcode, exactly one Validation Data Matrix Barcode printed on the front of the ticket. The ticket must also have exactly one UPC barcode, exactly one

Validation/Inventory Barcode with the game number and pack and ticket number appearing above the barcode and exactly one Inventory Tracking Barcode on the back of the ticket.

- B. Each of the Play Symbols must be present in its entirety and be fully legible.
- C. Each of the Play Symbols must be printed in black ink.
- D. The Ticket shall be intact.
- E. The Pack-Ticket Number and Ticket Validation Number must be present in their entirety and be fully legible. The Ticket Validation Number shall correspond, using the Lottery's codes, to the Play Symbols on the Ticket.
- F. The Ticket must not be mutilated, altered, unreadable, reconstituted, or tampered with in any manner.
- G. The Ticket must not be counterfeit in whole or in part.
- H. The Ticket Validation Number and the Pack-Ticket Number shall be printed in black ink.
- I. The Ticket must have been issued by the Lottery in an authorized manner.
- J. The Ticket must not be stolen nor appear on any list of omitted Tickets on file at the Lottery.
- K. The Play Symbols, Ticket Validation Number and Pack-Ticket Number must be right side up and not reversed in any manner.
- L. The Ticket Validation Numbers of an apparent winning Ticket shall appear on the Lottery's official list of Validation Numbers of winning Tickets; and a Ticket with that Validation Number shall not have been paid previously.
- M. The Ticket must not be blank or partially blank, misregistered, defective, or printed or produced in error.
- N. The game play area must be exactly as described in paragraph 3.5 and 3.6.
- O. Each of the Play Symbols on the Ticket must be printed in the Symbol Font and must correspond precisely to the artwork on file at the Lottery; each of the legends must correspond precisely to the artwork on file at the Lottery; the Pack-Ticket number must correspond precisely to the artwork on file at the Lottery; and the Ticket Validation Numbers must be printed in the Validation Font and must correspond precisely to the artwork on file at the Lottery.
- P. The display printing must be regular in every respect and correspond precisely with the artwork on file at the Lottery.
- Q. The Ticket must pass all additional validation tests provided for in the Rules of the Iowa Lottery and confidential validation tests of the Lottery.

6.2 A Ticket which fails any of the Lottery's validation checks is invalid and ineligible for any prize. The CEO may replace an invalid Ticket with an unplayed Ticket from the same game or any other game. If a defective Ticket is purchased, the only responsibility or liability of the CEO shall be the

replacement of the defective Ticket with an unplayed Ticket from the same game or any other game, or a refund of the sale price of the ticket.

SECTION 7 - INSTANT TICKET CLAIM PERIOD AND TICKET RESPONSIBILITY

- 7.1 All game prizes must be claimed within 90 days of the announced end of the game. All mailed prize claims must be sent to the official mailing address available at ialottery.com, and received by the Lottery prior to the expiration of the claim period set forth above. Any prize not claimed within the period specified herein and in the manner specified on the back of each Ticket shall be forfeited. In the event the last day to claim a prize falls on a Saturday, a Sunday, a legal holiday or any other day appointed or recommended by the Governor of Iowa or the President of the United States as a day of fasting or thanksgiving, the time to claim shall be extended to the close of business on the next day thereafter when Lottery offices are open for business.
- 7.2 An instant game Ticket is a bearer instrument until signed on the back by the owner.
- 7.3 The Lottery shall not be responsible for lost or stolen Tickets.
- 7.4 The Lottery shall not be responsible for Tickets lost in the mail, mailed to an incorrect address or mailed to an address other than the addresses specified by the Lottery to receive prize claims, or tickets not received by the Lottery before the expiration of the claim period set forth in these rules.
- 7.5 The Lottery shall not be responsible for Tickets claimed by a player in error for a lower prize at a Retailer.

SECTION 8 - PRICE OF TICKET

The price of an Instant Game #505 ticket is \$2.00.